

REV	ECN. NO.	APPD.
A	DC05043	L M R 6/13/2005

Specification

1. Material & Finish

Contact: Phosphor Bronze
 Insulator: P.B.T (UL94V-0)
 Contact Plating: Gold Plated 1u" Over 50u"
 Nickel On Contact Area & Tin Plating On Terminal

2. Electrical

Contact Resistance: 20m ohms Max.
 Insulation Resistance: 1000M ohms Min.
 Operation Voltage: 125V AC max.
 Current Rating: 1.5A DC
 Dielectric Withstanding Voltage: 500V AC Min.
 Operating Temperature: -55° To +105°
 Solderability: 260±5°/10sec±1sec

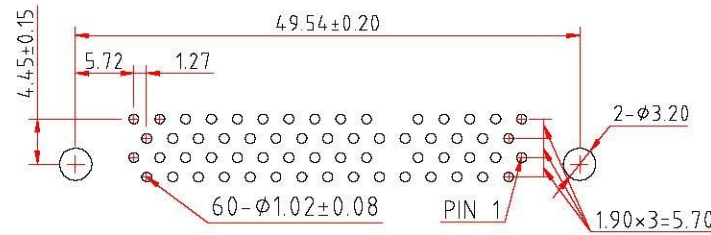
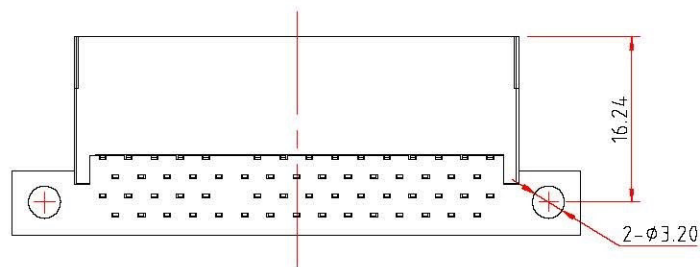
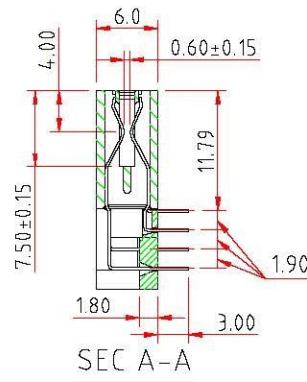
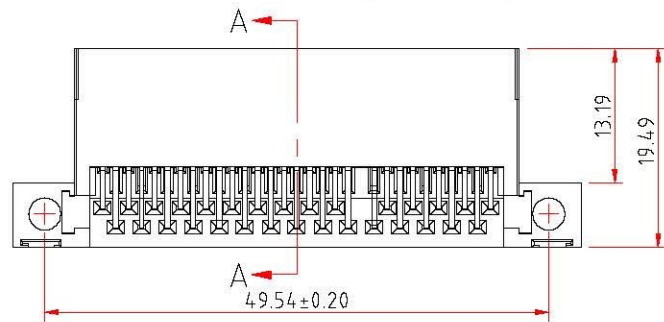
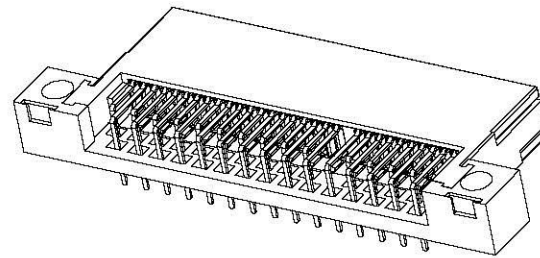
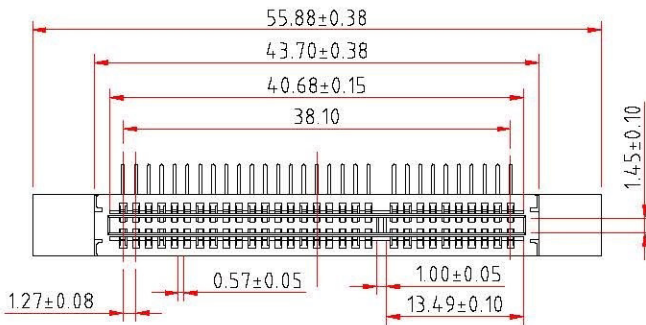
3. Mechanical

P.C.Board Thickness: 1.2mm
 Insertion Force: 2.7kg(5.95lbs) Max.
 Withdraw Force: 0.41kg(0.89lbs) Min./1.5kg(3.31lbs) Max.
 Durability: 5000 Cycles Min.

4. Part no. Matrix:

5100-60-R-2
 60: 60 pos.

Plating:
 2: 1u" min. Gold Plated on Contact Area
 R: Right Angle type



X±	X± 0.38	XX± 0.25	NAME-<INTENDED USE> 1.27mm pitch right angle edge card conn.	
X°±	X°±	XX°±		
UNITS:	mm	DATE: 6/10/2005	PART NO. <INTENDED USE> 5100 SERIES	TITLE: CUSTOMER DRAWING
MAT'L			APPD: L M R	DWG NO. 010-0002-518
			CHKD: GUOCHAO YAN	SCALE SHEET REV N/A 1/1 A
			DR: CHENG HONG LI	

All Connectors

www.allconnectors.de
 Tel.: 0049 711 7009503
 70794 Filderstadt - Germany

info@allconnectors.de
 Fax: 0049 711 7009504
 Kettnerstr. 25